

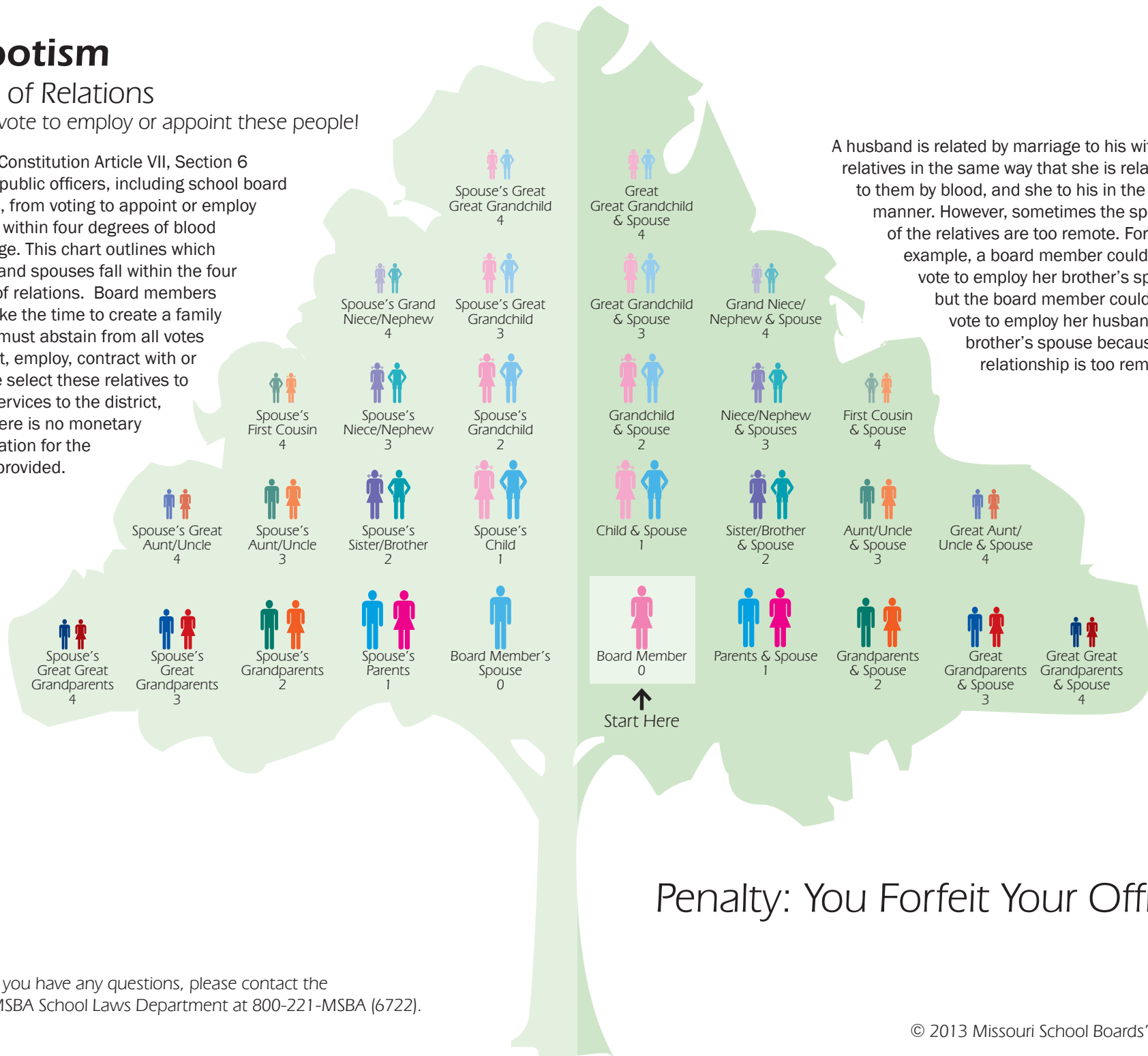
Nepotism

Chart of Relations

Do not vote to employ or appoint these people!

Missouri Constitution Article VII, Section 6 prohibits public officers, including school board members, from voting to appoint or employ a relative within four degrees of blood or marriage. This chart outlines which relatives and spouses fall within the four degrees of relations. Board members should take the time to create a family tree and must abstain from all votes to appoint, employ, contract with or otherwise select these relatives to provide services to the district, even if there is no monetary compensation for the services provided.

A husband is related by marriage to his wife's relatives in the same way that she is related to them by blood, and she to his in the same manner. However, sometimes the spouses of the relatives are too remote. For example, a board member could not vote to employ her brother's spouse, but the board member could vote to employ her husband's brother's spouse because the relationship is too remote.



Penalty: You Forfeit Your Office!